

Коммуникационные платы РС/104 серии РСМ-3600

ТЕХНИЧЕСКИЕ ХАРАКТЕРИСТИКИ

По вопросам продаж и поддержки обращайтесь:

Архангельск (8182)63-90-72
Астана +7(7172)727-132
Белгород (4722)40-23-64
Брянск (4832)59-03-52
Владивосток (423)249-28-31
Волгоград (844)278-03-48
Вологда (8172)26-41-59
Воронеж (473)204-51-73
Екатеринбург (343)384-55-89
Иваново (4932)77-34-06
Ижевск (3412)26-03-58
Казань (843)206-01-48

Калининград (4012)72-03-81
Калуга (4842)92-23-67
Кемерово (3842)65-04-62
Киров (8332)68-02-04
Краснодар (861)203-40-90
Красноярск (391)204-63-61
Курск (4712)77-13-04
Липецк (4742)52-20-81
Магнитогорск (3519)55-03-13
Москва (495)268-04-70
Мурманск (8152)59-64-93
Набережные Челны (8552)20-53-41

Нижний Новгород (831)429-08-12
Новокузнецк (3843)20-46-81
Новосибирск (383)227-86-73
Орел (4862)44-53-42
Оренбург (3532)37-68-04
Пенза (8412)22-31-16
Пермь (342)205-81-47
Ростов-на-Дону (863)308-18-15
Рязань (4912)46-61-64
Самара (846)206-03-16
Санкт-Петербург (812)309-46-40
Саратов (845)249-38-78

Смоленск (4812)29-41-54
Сочи (862)225-72-31
Ставрополь (8652)20-65-13
Тверь (4822)63-31-35
Томск (3822)98-41-53
Тула (4872)74-02-29
Тюмень (3452)66-21-18
Ульяновск (8422)24-23-59
Уфа (347)229-48-12
Челябинск (351)202-03-61
Череповец (8202)49-02-64
Ярославль (4852)69-52-93

PCM-3610

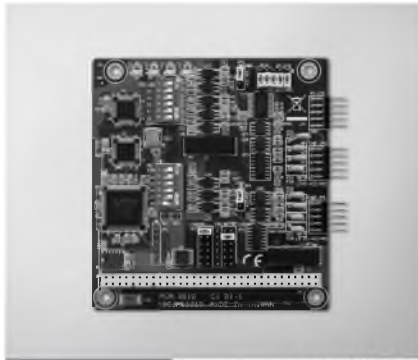
PCM-3612

PCM-3614

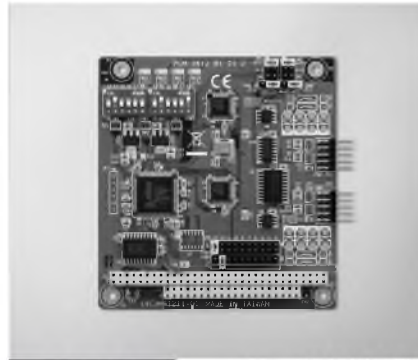
2-port RS-232/422/485 PC/104 Module with Isolation Protection

2-port RS-422/485 PC/104 Module

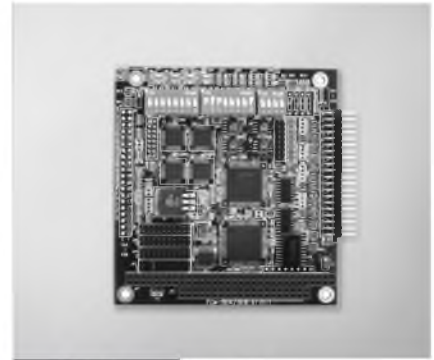
4-port RS-422/485 High-speed PC/104 Module



PCM-3610



PCM-3612



PCM-3614



Features

- High speed transmission rate
- Automatic RS-485 data flow control
- Jumper selectable interrupt level
- Supports Windows 2000/XP/Vista/7
- Supports WinCE 4.2, 5.0
- Powerful and easy-to-use utility (ICOM Tools)

Specifications

General

- **Card Interface** PC/104
- **Certification** CE, FCC
- **Connectors** 2 x DB9-M
- **Ports** 2
- **Power Consumption** +5V @ 400mA (Typical)

Communications

- **Channel 1** RS-232, 422, or 485
- **Channel 2** RS-422, or RS-485
- **Character Length** 5, 6, 7, or 8 bits
- **IRQ** 3, 4, 5, 6, 7, 9
- **Parity** Even, Odd, or None
- **Speed** 50 bps ~ 115.2 kbps
- **Stop Bit** 1, 1.5, or 2

Protection

- **Isolation Protection** 2,500 V_{DC}

Environment

- **Operating Humidity** 0 ~ 90 % RH
- **Operating Temperature** -40 ~ 85°C (-40 ~ 185°F)
- **Storage Temperature** -40 ~ 85°C (-40 ~ 185°F)

Ordering Information

- **PCM-3610** Isolated RS-232/422/485 Module

Features

- Long distance communication
- Automatic RS-485 data flow control
- Jumper selectable interrupt level
- Supports Windows 2000/XP/Vista/7
- Supports WinCE 4.2, 5.0
- Powerful and easy-to-use utility (ICOM Tools)

Specifications

General

- **Card Interface** PC/104
- **Certification** CE, FCC
- **Connectors** 2 x DB9-M
- **Indicators** Red LED for TX
Green LED for RX
- **Ports** 2
- **Power Consumption** +5V @ 400mA (Typical)

Communications

- **Channel 1 and 2** RS-422, or RS-485
- **Character Length** 5,6,7, or 8 bits
- **IRQ** 3, 4, 5, 6, 7, 9, 10, 11, 12 or 15
- **Parity** Even, Odd, or None
- **Speed** 50 bps ~ 115.2 kbps
- **Stop Bit** 1, 1.5, or 2

Environment

- **Operating Humidity** 0 ~ 90 % RH
- **Operating Temperature** -40 ~ 85°C (-40 ~ 185°F)
- **Storage Temperature** -40 ~ 85°C (-40 ~ 185°F)

Ordering Information

- **PCM-3612** Dual Port RS-422/485 Module

Features

- Automatic RS-485 data flow control
- Shared IRQ settings for each ports
- LED indicators: TX, RX
- Standard PC ports: COM1, COM2, COM3, COM4 compatible
- Supports Windows 2000/XP/Vista/7
- Supports WinCE 4.2, 5.0
- Powerful and easy-to-use utility (ICOM Tools)

Specifications

General

- **Card Interface** PC/104
- **Certification** CE, FCC
- **Connectors** 4 x DB9-M
- **Ports** 4
- **Power Consumption** +5V @ 450mA (Typical)

Communications

- **Data Bits** 5, 6, 7, 8
- **I/O Address Range** 0 x 000 ~ 0 x 3F8
- **IRQ** 3, 4, 5, 6, 7, 9, 10, 11, 12, or 15
- **Parity** Even, Odd, or None
- **Data Signals** RS-422: TxD+, TxD-, RxD+, RxD-, CTS+, CTS-, RTS+, and RTS-
RS-485: DATA+, DATA-
50 bps ~ 921.6 kbps
- **Speed** 50 bps ~ 921.6 kbps
- **Stop Bits** 1, 1.5, 2
- **Termination Resistor** 120 Ω

Environment

- **Operating Humidity** 0 ~ 90 % RH
- **Operating Temperature** 0~65°C (32~149°C)
- **Storage Temperature** -40 ~ 85°C (-40 ~ 185°F)

Ordering Information

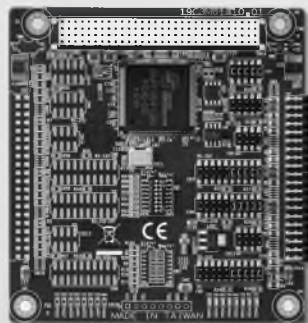
- **PCM-3614** 4-port RS-422/485 High-speed Module

PCM-3614I

PCM-3641I

4-port RS-232/422/485 PCI-104 Module

4-port RS-232 PCI-104 Module



PCM-3614I



Features

- Automatic RS-485 data flow control
- Shared IRQ settings for each port
- LED indicators: TX, RX
- Standard PC ports: COM1, COM2, COM3, COM4 compatible
- Supports Windows 2000/XP/Vista/7 and Linux
- Supports WinCE 5.0/6.0
- Powerful and easy-to-use utility (ICOM Tools)

Specifications

General

- **Card Interface** PCI-104
- **Connectors** 1 x 40-pin header
- **Ports** 4
- **Power Consumption** +5V @ 450 mA

Communications

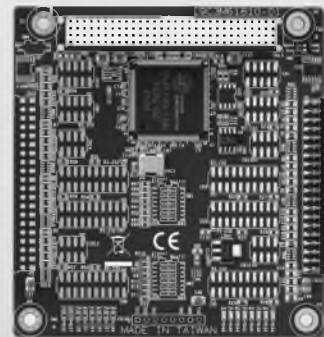
- **Data Bits** 5, 6, 7, 8
- **Data Signals** RS-422: TxD+, TxD-, RxD+, RxD-
RS-485: DATA+, DATA-
RS-232: TxD, RxD, RTS, CTS, DTR, DSR, DCD, RI
- **IRQ** 3, 4, 5, 6, 7, 9, 10, 11, 12, 15
- **Parity** None, Even, or Odd
- **Speed** 50 bps ~ 921.6 kbps
- **Stop Bits** 1, 1.5, 2
- **Termination Resistor** 120 Ω

Environment

- **Operating Humidity** 0 ~ 90 % RH
- **Operating Temperature** -40 ~ 85°C (-40 ~ 185°F)
- **Storage Temperature** -40 ~ 85°C (-40 ~ 185°F)

Ordering Information

- **PCM-3614I** 4-port RS-232/422/485 PCI-104 Module
- **PCM-3618I** 8-port RS-232/422/485 PCI-104 Module



PCM-3641I



Features

- Transmission speeds up to 460 kbps
- Shared IRQ settings for each port
- Standard PC ports: COM1, COM2, COM3, COM4 compatible
- Supports Windows 2000/XP/Vista/7 and Linux
- Supports WinCE 5.0/6.0
- Powerful and easy-to-use utility (ICOM Tools)

Specifications

General

- **Card Interface** PCI-104
- **Connectors** 1 x 40-pin header
- **Ports** 4
- **Power Consumption** +5V @ 250 mA (max.)

Communications

- **Data Bits** 5, 6, 7, 8
- **Data Signals** TxD, RxD, RTS, CTS, DTR, DSR, DCD, RI
- **IRQ** 3, 4, 5, 6, 7, 9, 10, 11, 12, 15
- **Parity** None, Even, or Odd
- **Speed** 50 bps ~ 460.3 kbps
- **Stop Bits** 1, 1.5, 2
- **Termination Resistor** 120 Ω

Environment

- **Operating Humidity** 0 ~ 90 % RH
- **Operating Temperature** -40 ~ 85°C (-40 ~ 185°F)
- **Storage Temperature** -40 ~ 85°C (-40 ~ 185°F)

Ordering Information

- **PCM-3641I** 4-port RS-232 PCI-104 Module

PCM-3618

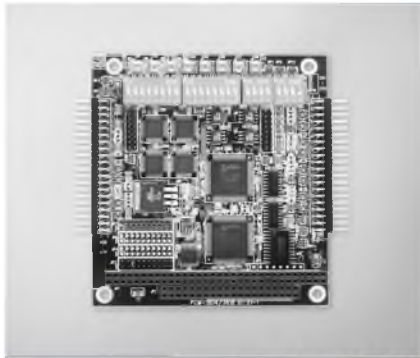
PCM-3640/3641

PCM-3660

8-port RS-422/485 High-speed PC/104 Module

4-port RS-232 High-speed PC/104 Module

Jumperless Ethernet PC/104 Module



PCM-3618



PCM-3641



PCM-3660



Features

- Automatic RS-485 data flow control
- Shared IRQ settings for each ports
- LED indicators: TX, RX
- Supports Windows 2000/XP/Vista/7
- Supports WinCE 5.0/6.0
- Powerful and easy-to-use utility (ICOM Tools)

Specifications

General

- **Card Interface** PC/104
- **Certification** CE, FCC
- **Connectors** 8 x DB9-M
- **Ports** 8
- **Power Consumption** +5V @ 650 mA

Communications

- **Data Bits** 5, 6, 7, 8
- **I/O Address Range** 0 x 000 ~ 0 x 3F8
- **IRQ** 3, 4, 5, 6, 7, 9, 10, 11, 12, 15
- **Parity** None, Even, or Odd
- **Data Signals** RS-422: TxD+, TxD-, RxD+, RxD-, CTS+, CTS-, RTS+, and RTS-
RS-485: DATA+, DATA-
- **Speed** 50 bps ~ 921.6 kbps
- **Stop Bits** 1, 1.5, 2
- **Termination Resistor** 120 Ω

Environment

- **Operating Humidity** 0 ~ 90 % RH
- **Operating Temperature** 0 ~ 65°C (32 ~ 149°F)
- **Storage Temperature** -25 ~ 80°C (-13 ~ 176°F)

Ordering Information

- **PCM-3618** 8-port RS-422/485 High-Speed Module

Features

- Transmission speeds up to 460 kbps (PCM-3641)
- Shared IRQ settings for each of 4 RS-232 ports (PCM-3641)
- Standard PC ports: COM1, COM2, COM3, COM4 compatible
- Supports Windows 2000/XP/Vista/7
- Supports WinCE 5.0/6.0
- Powerful and easy-to-use utility (ICOM Tools)

Specifications

General

- **Card Interface** PC/104
- **Certification** CE, FCC
- **Connectors** 4 x DB9-M
- **Ports** 4
- **Power Consumption** +5V @ 200 mA (Typical)
+5V @ 250 mA (Max)

Communications

- **Data Bits** 5, 6, 7, 8
- **Data Signals** RS-232: TxD, RxD, RTS, CTS, DTR, DSR, DCD, RI
- **I/O Address Range** 0 x 0200 ~ 0 x 03F8
- **IRQ** 3, 4, 5, 6, 7, 9, 10, 11, 12, 15
- **Parity** None, Even, or Odd
- **Speed** 50 bps ~ 460.3 kbps (PCM-3641)
50 bps ~ 115.2 kbps (PCM-3640)
- **Stop Bits** 1, 1.5, 2

Environment

- **Operating Humidity** 0 ~ 90 % RH
- **Operating Temperature** 0 ~ 65°C (32 ~ 149°F)
- **Storage Temperature** -25 ~ 80°C (-13 ~ 176°F)

Ordering Information

- **PCM-3640** 4-port RS-232 Module
- **PCM-3641** 4-port RS-232 High-speed Module

Features

- Automatically detects 8-bit or 16-bit
- AUI connector supports external MAUs
- Onboard 32 KB buffer for multi-packages

Specifications

General

- **Boot ROM Address** C0000, C8000, D0000, or D8000H
- **Card Interface** PC/104
- **Certification** CE, FCC
- **Connectors** 1 x PC/104 stackthrough
1 x 10Base-T (RJ-45)
1 x 16-pin insulation displacement connector for AUI
- **Power Consumption** +5V @ 400 mA max

Communications

- **Data Bus** 8-bit, 16-bit, or auto-sending
- **I/O Address** 200, 220, 240, 260, 280, 2A0, 2C0, 300, 320, 340, 380, 3A0
- **IRQ** 3, 4, 5, 9, 10, 11, 12 or 15
- **Standard** IEEE 802.3 10 Mbps CSMA/CD 10Base-T Transceiver

Environment

- **Operating Humidity** 10 ~ 90% RH
- **Operating Temperature** 0 ~ 70°C (32 ~ 158°F)
- **Storage Temperature** -15 ~ 80°C (5 ~ 176°F)

Ordering Information

- **PCM-3660** Jumperless Ethernet Module

PC/104 Datacom Modules



PCM-3117
PCI to ISA Bridge Module



Specifications

| General | |
|------------------------------|--|
| Bus Interface | PC/104-Plus |
| Controller | ITE IT8888F |
| Bus | PC/104 (ISA) and PC/104+ (PCI) |
| Mechanical and Environmental | |
| Dimensions (L x W) | 96 x 90 mm (3.8" x 3.5") |
| Weight | 0.092 kg (0.203 lb) |
| Operating Temperature | 0 ~ 60° C (32 ~ 140° F) |
| Storage Temperature | -40 ~ 85° C (-40 ~ 18° F) |
| Operating Humidity | 0% ~ 90% relative humidity, non-condensing |
| Power | |
| Power Supply Voltage | +5 V, ±5 % tolerance on power supply |
| Power Consumption | +5 V @ 70 mA (typical) |

Ordering Information

| P/N | Description |
|----------------|--------------------------|
| PCM-3117-00A1E | PCI to ISA bridge module |



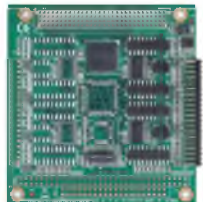
PCM-3614/3618
4/8-Port RS-422/485
High-speed PC/104 Module

Specifications

| General | |
|------------------------------|--|
| Connectors | PC/104 |
| Ports | PCM-3614: 4 ; PCM-3618: 8 |
| Power Consumption | PCM-3614: +5 V @ 450 mA PCM-3618: +5V @ 650 mA |
| Communications | |
| Data Bits | 5, 6, 7, 8 |
| Data Signals | RS-422: TxD+, TxD-, RxD+, RxD-, CTS+, CTS-, RTS+ and RTSRS- (RTS- for PCM-3614) 485: DATA+, DATA-, CTS+, CTS- |
| IRQ | 3, 4, 5, 6, 7, 9, 10, 11, 12, 15 |
| Parity | None, Even and Odd |
| Speed | 50 bps ~ 921.6 kbps |
| Stop Bits | 1, 1.5, 2 |
| Protection | |
| EFT Protection | 1,000 V _{DC} |
| Mechanical and Environmental | |
| Operating Humidity | 0 ~ 90 % RH |
| Operating Temperature | 0 ~ 65° C (32 ~ 149° F) (IEC-68-1-1, 2) |
| Storage Temperature | -25 ~ 80° C (-13 ~ 176° F) |
| Dimensions (L x W) | 96 x 90 mm (3.8" x 3.5") |

Ordering Information

| P/N | Description |
|-------------|-------------------------------------|
| PCM-3614-AE | 4-port RS-422/485 High-Speed Module |
| PCM-3618-AE | 8-port RS-422/485 High-Speed Module |



PCM-3614I/3618I
4/8-Port RS-232/422/485
PCI-104 Modules

Specifications

| General | |
|------------------------------|---|
| Connectors | PCM-3614I: 1 x 40-pin box header, PCM-3618I: 2 x 40-pin box header |
| Ports | PCM-3614I: 4, PCM-3618I: 8 |
| Power Consumption | +5 V @ 450 mA |
| Communications | |
| Data Bits | 5, 6, 7, 8 |
| Data Signals | RS-422: TxD+, TxD-, RxD+, RxD-, CTS+, CTS-, RTS+, RTS- RS-485: DATA+, DATA-, GND RS-232: TxD, RxD, RTS, CTS, DTR, DSR, DCD, RI, GND |
| IRQ | 3, 4, 5, 6, 7, 9, 10, 11, 12, 15 |
| Parity | None, even and odd |
| Speed | 50 bps ~ 921.6 kbps |
| Stop Bits | 1, 1.5, 2 |
| Protection | |
| EFT Protection | 1,000 V _{DC} |
| Mechanical and Environmental | |
| Operating Humidity | 0 ~ 90 % RH |
| Operating Temperature | 0 ~ 65° C (32 ~ 149° F) |
| Storage Temperature | -25 ~ 80° C (-13 ~ 176° F) |
| Dimensions (L x W) | 96 x 90 mm (3.8" x 3.5") |

Ordering Information

| P/N | Description |
|--------------|--------------------------------------|
| PCM-3614I-AE | 4-port RS-232/422/485 PCI-104 Module |
| PCM-3618I-AE | 8-port RS-232/422/485 PCI-104 Module |



PCM-3641I/3642I
4/8-Port RS-232 PCI-104
Modules

Specifications

| General | |
|------------------------------|--|
| Connectors | PCM-3641I: 1 x 40-pin box header, PCM-3642I: 2 x 40-pin box header |
| Ports | PCM-3641I: 4, PCM-3642I: 8 |
| Power Consumption | +5 V @ 250 mA (max.) |
| Communications | |
| Data Bits | 5, 6, 7, 8 |
| Data Signals | TxD, RxD, RTS, CTS, DTR, DSR, DCD, RI, GND |
| IRQ | 3, 4, 5, 6, 7, 9, 10, 11, 12, 15 |
| Parity | None, even and odd |
| Speed | 50 bps ~ 460.3 kbps |
| Stop Bits | 1, 1.5, 2 |
| Protection | |
| EFT Protection | 1,000 V _{DC} |
| Mechanical and Environmental | |
| Operating Humidity | 0 ~ 90 % RH |
| Operating Temperature | 0 ~ 65° C (32 ~ 149° F) (IEC-68-1-1, 2) |
| Storage Temperature | -25 ~ 80° C (-13 ~ 176° F) |
| Dimensions (L x W) | 96 x 90 mm (3.8" x 3.5") |

Ordering Information

| P/N | Description |
|--------------|------------------------------|
| PCM-3641I-AE | 4-port RS-232 PCI-104 Module |
| PCM-3642I-AE | 8-port RS-232 PCI-104 Module |



PCM-3680/I

2-Port CAN-bus PC/104 / PCI-104 Module with Isolation Protection

Specifications

| General | |
|-----------------------|---|
| Card Interface | PCM-3680: PC/104 PCM-3680I: PCI-104 |
| Certifications | CE, FCC |
| Connectors | 2 x DB9-M with cable |
| Dimensions | 90 x 96 mm (3.6" x 3.8") |
| Ports | 2 |
| Power Consumption | 5 V @ 400 mA |
| Communications | |
| CAN Controller | SJA-1000 |
| CAN Transceiver | 82C250 |
| Protocol | CAN2.0 A/B |
| Speed | Up to 1 Mbps programmable transfer rate |
| CAN Frequency | 16 MHz |
| Signal Support | CAN_H, CAN_L |
| Protection | |
| Isolation Protection | 2,500 V _{DC} |
| Environment | |
| Operating Temperature | -40 ~ 85° C (-40 ~ 185° F) |

Ordering Information

| P/N | Description |
|--------------|--------------------------------------|
| PCM-3680-BE | Dual-port Iso CAN-bus PC/104 Module |
| PCM-3680I-AE | Dual-port Iso CAN-bus PCI-104 Module |



PCM-3643

4/8 RS-232 COM Port Module



Specifications

| General | |
|------------------------------|--|
| Bus Interface | PC/104 (ISA) |
| Chipset | Standard 16550, 16650, or 16750 compatible chipsets for serial ports |
| Channel | 4/8 port RS-232 support |
| Baud Rate | 50 ~ 115, 200 bps |
| Data Bits | 5, 6, 7 or 8-bits |
| Stop Bit | 1, 1.5, or 2 |
| Parity | Even, odd, or none |
| Interrupt Level | IRQ 3, 4, 5, 6, 7, 9, 10, 11, 12 or 15 |
| I/O Connector | 40-pin header |
| Mechanical and Environmental | |
| Dimensions (L x W) | 96 x 90 mm (3.8" x 3.5") |
| Weight | 0.084 kg (0.185 lb) |
| Operating Temperature | 0 ~ 60° C (32 ~ 140° F) |
| Storage Temperature | -40 ~ 85° C (-10 ~ 185° F) |
| Operating Humidity | 0% ~ 90% relative humidity, non-condensing |
| Power | |
| Power Supply Voltage | +5 V, ± 5% tolerance on power supply |
| Power Consumption | +5 V @ 400 mA (typical) |

Ordering Information

| P/N | Description |
|----------------|----------------------------|
| PCM-3643-08A1E | 8 x COM RS-232 Port Module |



PCM-3620

USB 2.0/IEEE 1394a PC/104-Plus Module



Specifications

| General | |
|------------------------------|---|
| Bus Interface | PC/104-Plus (PCI interface only) |
| Chipset | NEC® uPD720101 and TI TSB43AB23 |
| USB | 4 x USB 2.0 Compliant Ports Compliant with OHCI USB Rev 1.0a Compliant with EHCI for USB Rev 1.0 High-speed (480 Mbps), full-speed (12 Mbps) and low-speed (1.5 Mbps) transfer |
| IEEE 1394a | 3 port compliant with 1394 Open Host Controller Interface Specification (Release 1.1) |
| Mechanical and Environmental | |
| Dimensions (L x W) | 96 x 90 mm (3.8" x 3.5") |
| Weight | 0.81 kg (0.18 lb) |
| Operating Temperature | 0 ~ 60° C (32 ~ 140° F) |
| Operating Humidity | 0% ~ 90% relative humidity, non-condensing |
| Power | |
| Power Supply Voltage | +5 V, +12 V |

Ordering Information

| P/N | Description |
|-----------------|---|
| PCM-3620-00A1E | 4 x USB 2.0 and 3 IEEE 1394a PC/104-Plus Module |
| PCM-3620P-00A1E | 4 x USB 2.0 & 3 IEEE 1394a w/pinhead PC/104-Plus module |



PCM-3665

Dual GbE Module



Specifications

| General | |
|------------------------------|--|
| Bus Interface | PC/104-Plus (PCI interface only) |
| Chipset | Intel® 82541PI (PCI 10/100/1000 Mbps) |
| Port | Single/Twin Ethernet port |
| Speed | 10/100/1000 Mbps |
| Compatibility | PCI version 2.2, 33 MHz PCI |
| Mechanical and Environmental | |
| Dimensions (L x W) | 96 x 90 mm (3.8" x 3.5") |
| Weight | 0.09 kg (0.198 lb) |
| Operating Temperature | 0 ~ 60° C (32 ~ 140° F) |
| Storage Temperature | -40 ~ 85° C (-10 ~ 185° F) |
| Operating Humidity | 0% ~ 90% relative humidity, non-condensing |
| Power | |
| Power Consumption | Dual LAN: +5 V @ 1.2 A (typical) Single LAN: +5 V @ 0.6 A (typical) |
| Power Supply Voltage | +5 V, ±5% tolerance on power supply |

Ordering Information

| P/N | Description |
|-----------------|---------------------------------------|
| PCM-3665-00A1E | Dual GbE with RJ-45 connector Module |
| PCM-3665P-00A1E | Dual GbE w/o RJ-45 connector Module |
| PCM-3665-01A1E | Single GbE w/o RJ-45 connector Module |

По вопросам продаж и поддержки обращайтесь:

Архангельск (8182)63-90-72
Астана +7(7172)727-132
Белгород (4722)40-23-64
Брянск (4832)59-03-52
Владивосток (423)249-28-31
Волгоград (844)278-03-48
Вологда (8172)26-41-59
Воронеж (473)204-51-73
Екатеринбург (343)384-55-89
Иваново (4932)77-34-06
Ижевск (3412)26-03-58
Казань (843)206-01-48

Калининград (4012)72-03-81
Калуга (4842)92-23-67
Кемерово (3842)65-04-62
Киров (8332)68-02-04
Краснодар (861)203-40-90
Красноярск (391)204-63-61
Курск (4712)77-13-04
Липецк (4742)52-20-81
Магнитогорск (3519)55-03-13
Москва (495)268-04-70
Мурманск (8152)59-64-93
Набережные Челны (8552)20-53-41

Нижний Новгород (831)429-08-12
Новокузнецк (3843)20-46-81
Новосибирск (383)227-86-73
Орел (4862)44-53-42
Оренбург (3532)37-68-04
Пенза (8412)22-31-16
Пермь (342)205-81-47
Ростов-на-Дону (863)308-18-15
Рязань (4912)46-61-64
Самара (846)206-03-16
Санкт-Петербург (812)309-46-40
Саратов (845)249-38-78

Смоленск (4812)29-41-54
Сочи (862)225-72-31
Ставрополь (8652)20-65-13
Тверь (4822)63-31-35
Томск (3822)98-41-53
Тула (4872)74-02-29
Тюмень (3452)66-21-18
Ульяновск (8422)24-23-59
Уфа (347)229-48-12
Челябинск (351)202-03-61
Череповец (8202)49-02-64
Ярославль (4852)69-52-93